

ISSN 1993-9108  
9 771993 910003  
GPN : 2009301302  
定價 : NTD 200



高雄國際航空站

Kaohsiung International Airport, Civil Aeronautics Administration,  
Ministry of Transportation and Communications, R.O.C.  
<http://www.kia.gov.tw>



# Annual Report

## 2011

高雄國際航空站100年年報  
Kaohsiung International Airport



# CONTENTS

## 目錄



Kaohsiung International Airport

2011  
Annual Report



02 壹、序言  
Preface

04 貳、組織編制  
Organization

06 參、全區配置圖  
Airport Layout



08 肆、航空公司及航線  
Airlines and Air Routes

12 伍、營運實績  
Operational Statistics

16 陸、設施更新  
Renovation of Facilities



20 柒、未來重要建設 Future Major Constructions

22 捌、大事記 Major Events in 2011

24 玖、基本設施資料 General Information



## 壹 序言

高雄國際機場兼營國際及國內航線，提供南台灣便捷的空中運輸服務，100年航機起降42,596架次、進出旅客4,050,413人次、貨運量55,364公噸，維持穩定狀態。

過去一年，我們引進連鎖便利商店進駐並增設餐飲店，提供多元化商品供旅客選擇，於服務台增加郵政代辦所服務，延長郵政服務時間，持續推動內候機室ROT案，設置具特色之主題候機室，並擴大兩岸直航航班與航點，使得往來兩岸更加便利。

未來，我們仍將以提供安全、便捷、優質服務為目標，隨時掌握市場變化，調整經營策略，並以顧客需求為導向，持續致力於軟硬體設施的擴充與改善，以達到本航站「飛航安全、世界一流，民航服務、顧客滿意」的目標。



## Preface

The Kaohsiung Airport is operated with international and domestic air routes, providing convenient and rapid air transportation in Southern Taiwan. In 2011, the air port has offered 42,596 flights, served 4,050,413 passengers and transported 55,364 tons of cargo that remained a steady growth.

In 2011, the airport introduced chain convenience store to station at airport and increased restaurants to provide passengers with diversified choices. The airport also increased the postal agency service in the information desk. Additionally the airport prolongs postal service time, continuously promotes ROT at waiting room, sets up theme waiting room and expands cross-strait direct flights and destinations to provide passengers with convenient services across strait.

In the future, we will continue to provide passengers with safe, convenient and high-quality services, catching up with changeful market, adjusting strategies of operation. In addition, we will continuously dedicate ourselves to expanding and improving software and hardware facilities and conform to customer-oriented demand to achieve the objectives of "World Class Flight Safety, First Class Customer Service".

慶祝中華航空  
11/01 日 沙 班機首航  
高雄

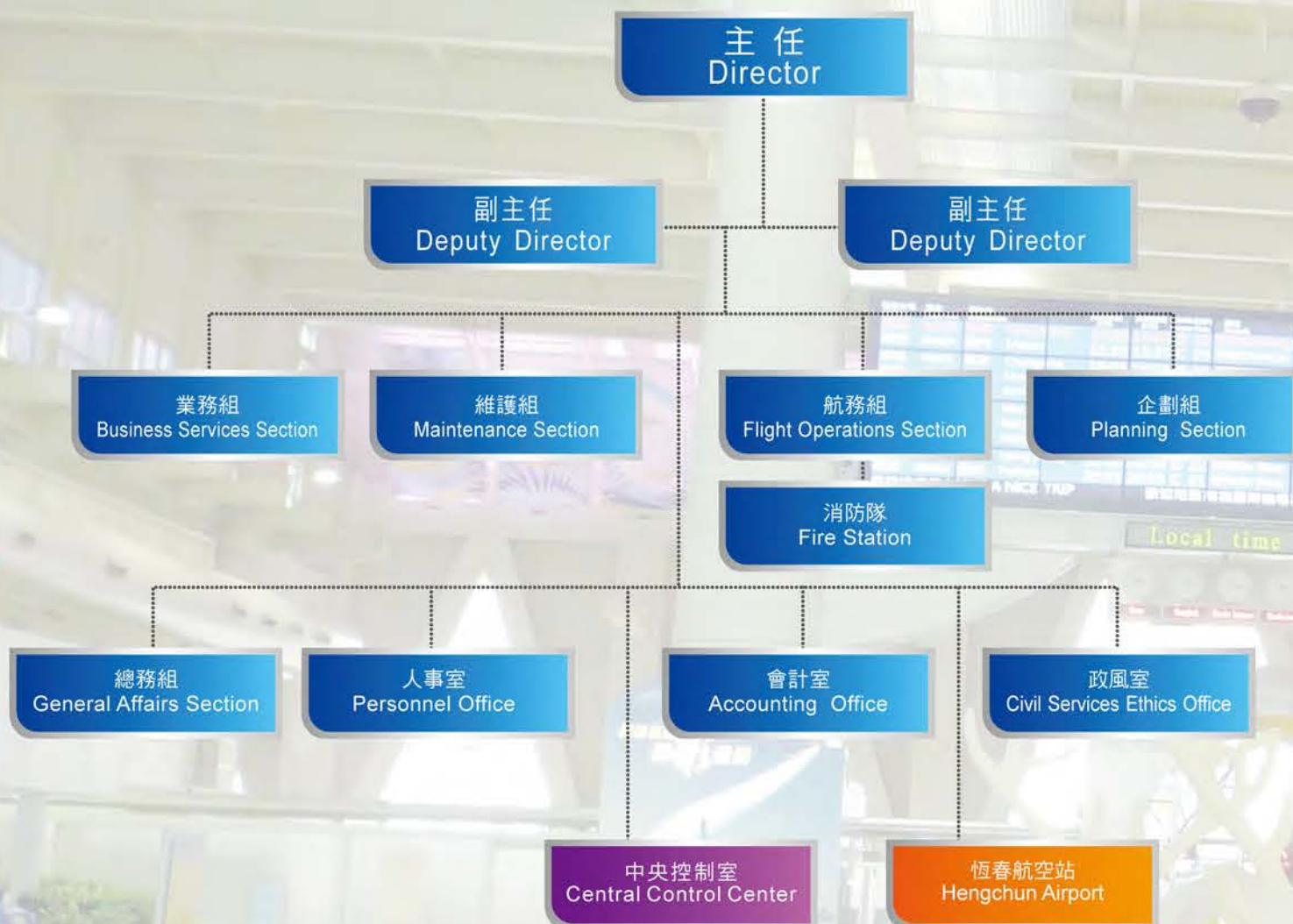
中華航空  
CHINA AIRLINES





貳 組織編制

Organization



- 編制單位 Formal Unit
- 任務編組單位 Task Force Unit
- 民航局委託督導單位 Supervision Unit

※ 屏東航空站於100年9月1日組織裁撤。  
Pingtung Airport organization was abolished on September 1, 2011.





參 全區配置圖

# Airport Layout



- |                                   |   |                              |                                     |  |                        |
|-----------------------------------|---|------------------------------|-------------------------------------|--|------------------------|
| 1 國內線航廈<br>Domestic Terminal      | 4 大客車停車場<br>Bus Parking Lot                   | 7 消防隊<br>Fire Station        | 10 貨機坪<br>Cargo Flight Parking Bay  | 13 焚化爐<br>Incinerator                  | 16 給水站<br>Water Pump   |
| 2 國際線航廈<br>International Terminal | 5 南部飛航服務園區<br>South Air Traffic Services Park | 8 接駁機坪<br>Remove Parking Bay | 11 維修棚廠<br>Maintenance Hangar       | 14 69KV變電站<br>69KV Transformer Station | 17 塔台<br>Control Tower |
| 3 小客車停車場<br>Car Parking Lot       | 6 立榮航空飛機棚廠<br>Uni Air Hangar                  | 9 貨運站<br>Cargo Terminal      | 12 直昇機停機坪<br>Helicopter Parking Bay | 15 污水處理廠<br>Sewage Treatment Plant     | 18 雷達站<br>Radar Site   |

2011 Annual Report

2011 Annual Report





## 肆 航空公司及航線

### 國際航線

由中華、長榮、復興、華信、立榮、日本航空、馬來西亞、越南、澳門、港龍、廈門等11家航空公司，經營東京、香港、澳門、馬尼拉、胡志明、曼谷、河內、吉隆坡、新加坡、名古屋、大阪、仁川及大陸杭州、上海、深圳、寧波、青島、福州、廣州、廈門、北京、長沙、合肥、重慶、南寧、鄭州、桂林、天津、昆明等29條定期航線；另有立榮、華信、復興、長榮4家航空公司不定期飛航吳哥窟、日本、韓國等包機航線；貨運班機則由華航、華信2家經營。總計每日起降航機約57架次，入出境旅客約 8,000人次，載運貨物約140公噸。

## Airlines and Air Routes

### International Flights

There are 11 airlines including China Airlines, EVA Airways, TransAsia Airways, Mandarin Airlines, Uni Airways, Japan Airlines, Malaysia Airlines, Viet Air, Air Macau, Dragonair and Xiamen Airlines operating 29 routes to Tokyo, Hong Kong, Macau, Manila, Ho Chi Minh, Bangkok, Hanoi, Kuala Lumpur, Singapore, Nagoya, Osaka, Incheon, Hangzhou, Shanghai, Shenzhen, Ningbo, Qingdao, Fuzhou, Guangzhou, Xiamen, Beijing, Changsha, Hefei, Chongqing, Nanning, Zhengzhou, Guilin, Tianjin, Kunming. Additionally, there are Uni Air, Mandarin Airlines, TransAsia Airways and EVA Airways provide charter flights to Siem Reap, Japan and Korea. The cargo planes are operated by China Airlines and Mandarin Airlines. On average, there are 57 flights, 8,000 passengers and 140 tons of cargo per day.



# Airlines and Air Routes





### 國內航線

由華信、復興、立榮、遠東、德安等5家航空公司飛航台北、馬公、金門、花蓮、望安及七美等6條航線。每日起降航機約60架次，搭乘旅客約3,000人次，載運貨物約10噸。

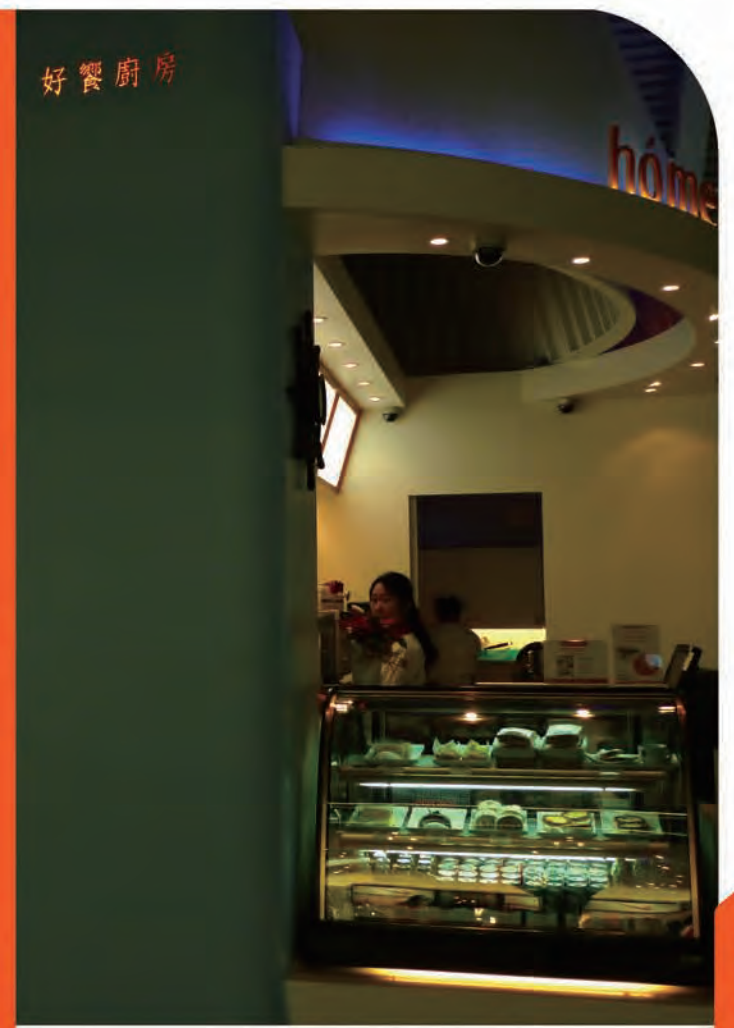


## Domestic Flights

There are five airlines, including Mandarin Airlines, TransAsia Airways, Uni Airways, Far Eastern Air Transport and Daily Air Corporation operating 6 routes to Taipei, Magong, Kinmen, Hualien, Wangan and Cimei. On average, there are 60 flights, 3,000 passengers and 10 tons of cargo per day.







## Operational Statistics

### 1. Aircraft Movements

In 2011, 20,888 aircraft movements of international flight were recorded, showing an increase of 1,074 over 2010, up 5.4%. For domestic flight, 21,708 aircraft movements were recorded, indicating an increase of 222 over 2010, up 1.0%.

### 2. Passenger Traffic

In 2011, the airport has served 2,882,354 passengers of international flight, showing a decrease of 47,747 passengers over 2010, down 1.6%, yet domestic flight has 1,168,059 passengers, indicating an increase of 45,091 passengers over 2010, up 4.0%.

### 3. Cargo Volume

In 2011, the international cargo volume was 51,688.4 tons, showing a decrease of 8,782 tons over 2010, down 14.5%. The domestic cargo volume totaled 3,676.0 tons, indicating a decrease of 705 tons over 2010, down 16.1%.

### 4. Revenue

In 2011, the operating income of Kaohsiung Airport was NT\$1.42 billion, showing an increase of NT\$75 million over 2010, up 5.6%.

## 伍 營運實績

### 一、航機架次

100年國際線航機為20,888架次，較99年增加1,074架次，成長5.4%；國內線航機為21,708架次，較99年增加222架次，成長1.0%。

### 二、旅客人次

100年國際線旅客為2,882,354人次，較99年減少47,747人次，下降1.6%；國內線旅客為1,168,059人次，較99年增加45,091人次，成長4.0%。

### 三、貨運量

100年國際線貨運量為51,688.4公噸，較99年減少8,782公噸，下降14.5%；國內線貨運量為3,676.0公噸，較99年減少705公噸，下降16.1%。

### 四、營運收入

100年營運收入合計為新台幣14億2仟萬元，較99年增加7仟5佰萬元，成長5.6%。

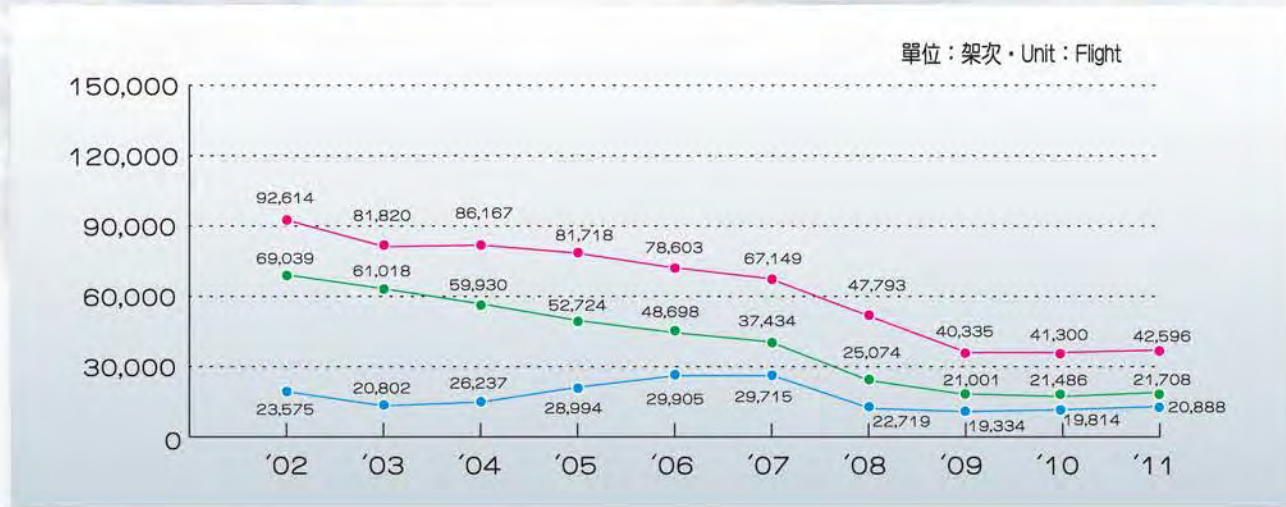
單位：新台幣/佰萬元 Unit: NT dollars / million

營運分析 Revenue Analysis	2010	2011	成長率 Growth Rate
降落費 Landing Fee	275	260	-5.50%
場站設施服務費 Apron Service Charge	136	177	29.88%
機場服務費 Passenger Charge	176	171	-2.67%
停車費 Vehicle-Parking Fee	6.9	6.8	-0.50%
權利金 Concession	554	591	6.72%
租金 Rent Fee	202	220	8.63%
其他收入 Others	0.8	0.8	-3.59%
總計 Total	1350	1426	5.58%



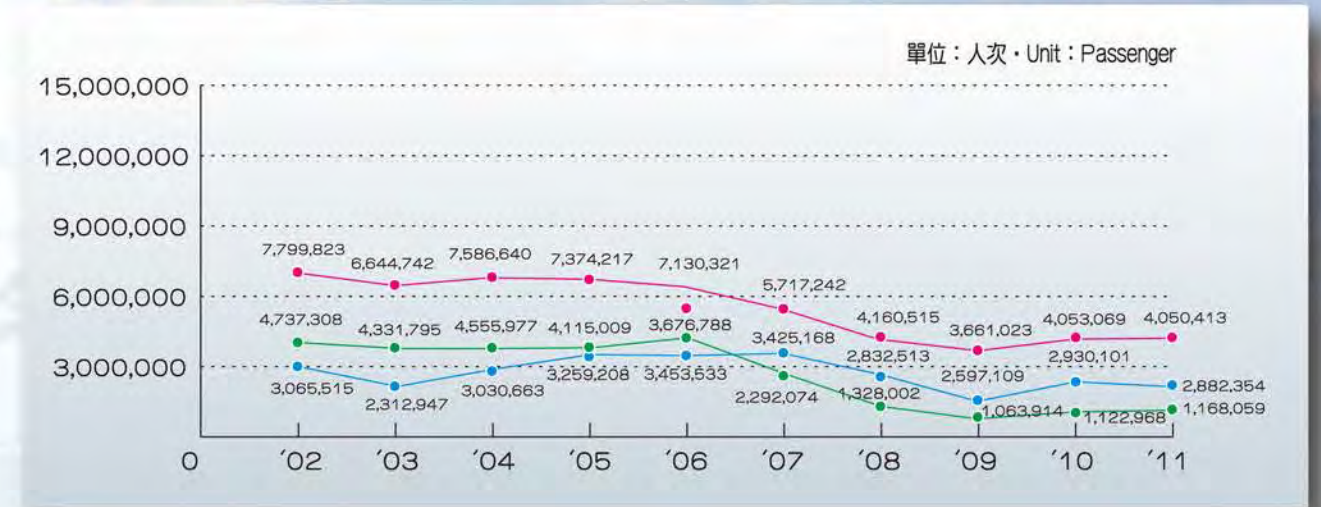
航機架次 Aircraft Movements

● 國際 International ● 國內 Domestic ● 總計 Total

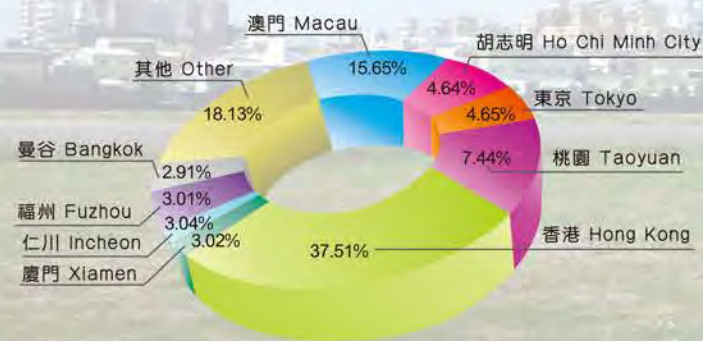


旅客人次 Passenger Traffic

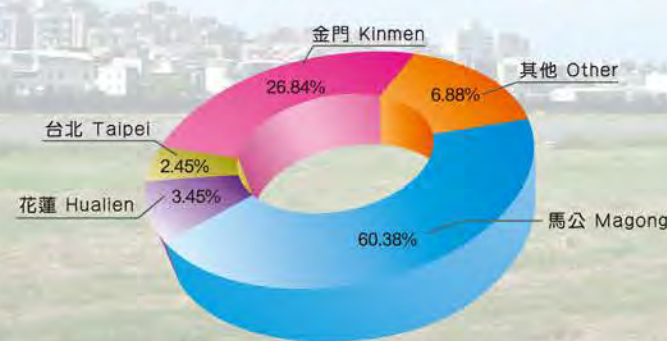
● 國際 International ● 國內 Domestic ● 總計 Total



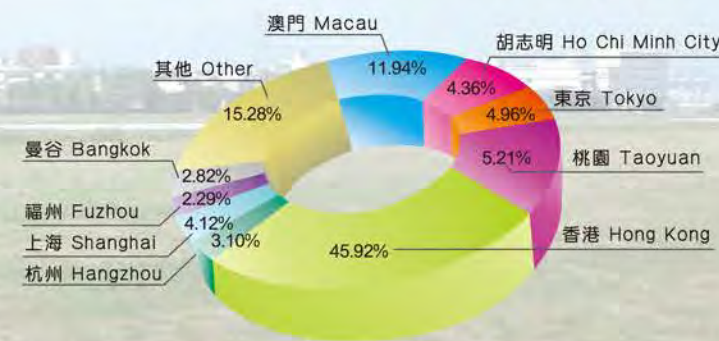
國際線架次數比例 International Flight Rate



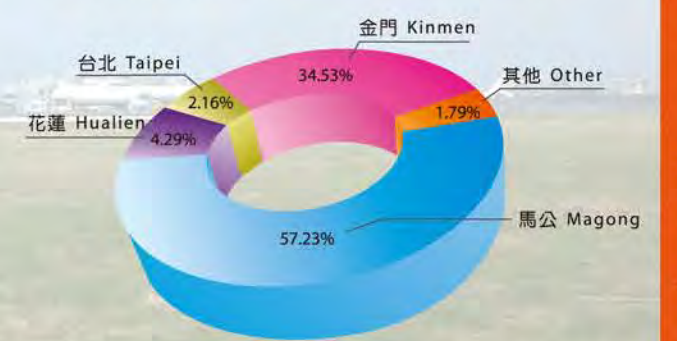
國內線架次數比例 Domestic Flight Rate



國際線旅客數比例 International Passenger Rate

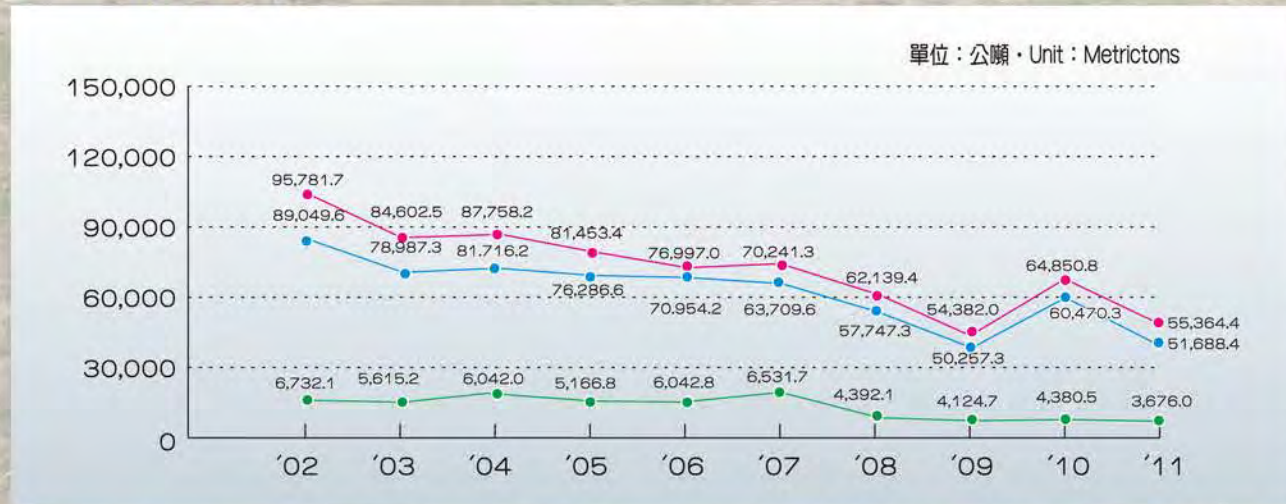


國內旅客數比例 Domestic Passenger Rate



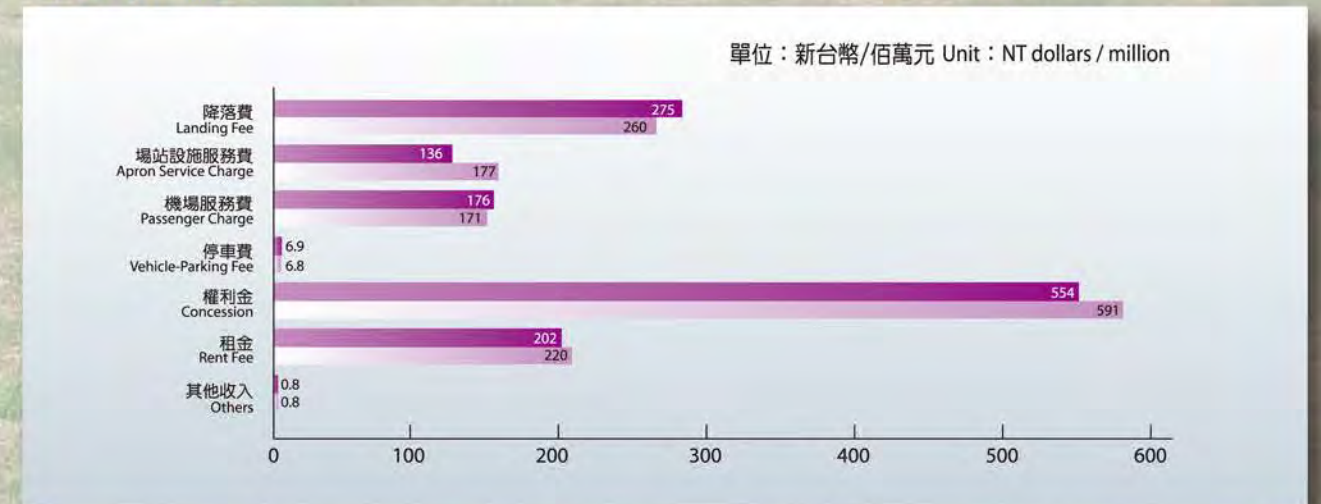
貨運量 Cargo Volume

● 國際 International ● 國內 Domestic ● 總計 Total



營運收入 Revenue

■ 2010 ■ 2011





## 陸 設施更新

(一) 美化及改善各候機室候機空間

(二) 汰換跑道及機坪道面接縫工程

(三) 汰換停車場設備及場面設施工程

(四) 航廈建築物改善及防水工程

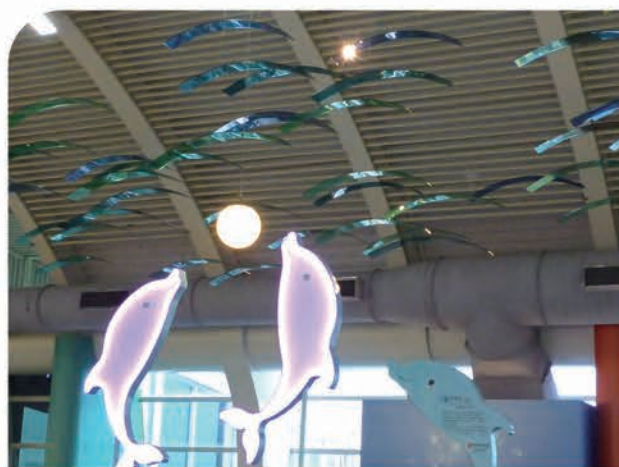
(五) 汰換飛航顯示資訊系統

(六) 航廈建築空調改善工程

(七) 環保設備汰換工程

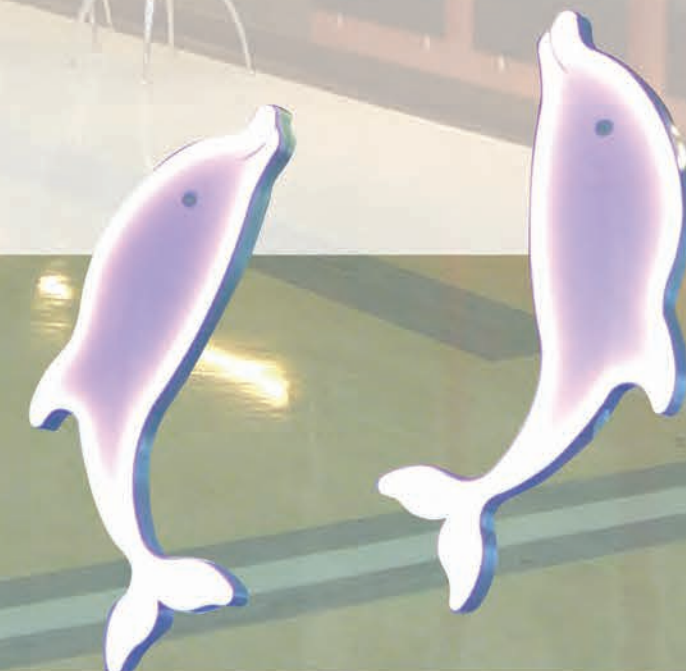






- (1) Beautify and improve space of the waiting rooms
- (2) Replacement of runway and apron joints
- (3) Replacement of parking lot and facilities
- (4) Improvement of terminal building and water proof construction
- (5) Replacement of FIDS
- (6) Improvement of terminal air condition system
- (7) Replacement of environmental protection equipment

# Renovation of Facilities







### Future Major Constructions

- (1) To assist TACT (Taiwan Air Cargo Terminal) to re-build cargo station to improve the cargo processing capabilities.
- (2) Establish the South Air Traffic Services Park to promote the aviation service quality.
- (3) To handle land expropriation in Northern Side of airport to meet the airport safety regulations of ICAO.
- (4) Continuously promote airport accreditation operation to meet the ICAO standards.



### 柒 未來重要建設

- 一、協助華儲公司貨運站改建，提升貨運處理能量。
- 二、建立台灣南部飛航服務園區，提昇飛航服務品質。
- 三、辦理機場北面土地徵收，以符合ICAO機場安全標準。
- 四、持續推動機場認證作業，以符國際民航組織（ICAO）規範。



## 捌 機場大事記

- 100.04.13** 立法院交通委員會考察屏東地區交通建設，於下午至屏東機場瞭解整體規劃情形。
- 100.05.21** 大陸四川省長蔣巨峰率團搭乘長榮航空由高雄機場入境，為大陸首位包機從高雄入境的大陸正部級官員。
- 100.05.26** 廣州香江動物園致贈高雄壽山動物園一對白老虎，搭乘華航CI-586班機，由深圳起飛載運於下午13時35分抵運高雄。
- 100.07.15** 交通部民用航空局風險管理工作小組由方召集人志文帶隊至本站督導風險管理推動情形。
- 100.08.11** 屏東航空站結束營運。
- 100.09.01** 屏東航空站組織裁撤，並移交國防部使用。
- 100.09.09** 中華航空公司舉行高雄—北京航線首航儀式。
- 100.11.01** 華信航空公司首航高雄—長沙。
- 100.11.02** 華航航空公司首航高雄—重慶。  
復興航空公司首航高雄—合肥。
- 100.11.05** 復興航空公司首航高雄—南寧。
- 100.11.10** 復興航空公司首航高雄—河內。
- 100.11.15** 長榮航空公司首航高雄—桂林及高雄—鄭州。
- 100.11.18** 長榮航空公司首航高雄—天津。
- 100.12.01** 立榮航空首航高雄-昆明航線，每周二班。
- 100.12.25** 遠東航空復飛高雄-金門、高雄-馬公航線。

## Major Events in 2011

- April 13** Transportation Committee of The Legislative Yuan conducted evaluation of transportation construction in Pingtung area and visited Pingtung Airport to realize the planning situation in the afternoon.
- May 21** Jiang, Ju-feng, Governor of Sichuan Province led a delegation to visit Taiwan by EVA Airways. He is the first ministerial level official of China to visit Kaohsiung by charter flight.
- May 26** Chime-Long Xiangiang Safari Park sent Kaohsiung City Shou Shan Zoo a pair of white tiger that was brought from Shenzhen to Kaohsiung by CI-586 flight. The flight arrived at 13:35 pm at Kaohsiung Airport.
- July 15** Led by convener Fang, Chih-wen, Risk Management Task Force of Civil Aeronautics Administration supervised the promotion of risk management at airport.
- Aug.11** Pingtung Airport closed its operation.
- Sep.1** Pingtung Airport organization was abolished and the facility was handed over to Ministry of National Defense.
- Sep.9** China Airlines held a maiden flight ceremony for Kaohsiung to Beijing.
- Nov.1** Mandarin Airlines held a maiden flight ceremony for Kaohsiung to Changsha.
- Nov.2** China Airlines held a maiden flight ceremony for Kaohsiung to Chongqing. TransAsia Airways held a maiden flight ceremony for Kaohsiung to Hefei.
- Nov.5** TransAsia Airways held a maiden flight ceremony for Kaohsiung to Nanning.
- Nov.10** TransAsia Airways held a maiden flight ceremony for Kaohsiung to Hanoi.
- Nov.15** EVA Airways held a maiden flight ceremony for Kaohsiung to Guilin and for Kaohsiung to Zhengzhou.
- Nov.18** EVA Airways held a maiden flight ceremony for Kaohsiung to Tianjin.
- Dec.1** Uni Air held a maiden flight ceremony for Kaohsiung to Kunming, two flights a week.
- Dec.25** Far Eastern Air Transport restarted its flight service for Kaohsiung to Kinmen and Kaohsiung to Makung.



## 玖 基本設施資料

地理位置：中華民國，高雄市，東經：120°21' 1"，北緯：22° 34' 37"

總面積：244公頃

航站大廈：國內航廈面積17,500平方公尺。

國際航廈面積70,985平方公尺。

(登機門12個，空橋16座，旅客報到櫃檯80個)

跑道：長3,150公尺，寬60公尺。

停機坪：面積414,835平方公尺，停機位45個。

維修棚廠：二座，面積各為7,056平方公尺及2,372平方公尺。

人行天橋：人行天橋：一座，長343公尺，連接國內航廈與國際航廈之用。

停車場：停放大客車25輛，小客車994輛，身心障礙用車33輛，貴賓車20輛。

貨運站：國內線及國際線航空貨運站各一座。

### General Information

**Geographical Location** : Kaohsiung City, Republic of China ,  
East Longitude : 120°21' 1" , North Latitude : 22°34' 37"

**Total Area** : 244 Hectares

**Terminal Building** : Domestic terminal is 17,500 square meters , International terminal is 70,985 square meters. (There are 12 boarding gates, 16 boarding bridges, 80 check-in counters)

**Runway** : 3,150 meters in length and 60 meters in width.

**Apron** : 414,835 square meters with 45 parking bays.

**Maintenance Hangar** : Two maintenance hangars are located at Kaohsiung International Airport.  
One is 7,056 square meters, and the other is 2,372 square meters.

**Pedestrian Bridge** : 343 meters in length, for connecting between domestic and international terminal building.

**Parking Lots** : 25 parking lots for bus, 994 parking lots for sedan, 33 parking lots for handicapped vehicle, and 20 VIP parking lots.

**Cargo Terminal** : One for domestic and the other for international cargoes.

### Title: Kaohsiung International Airport Annual Report 2011

**Edited:** Kaohsiung International Airport, Civil Aeronautics Administration , Ministry of Transportation and Communications, R.O.C.

**Published by:** Kaohsiung International Airport, Civil Aeronautics Administration , Ministry of Transportation and Communications , R.O.C.

**Tel:** 886-7-8057571

**Address:** No. 2, Jhongshan 4th Road, Hsiao Kang District, Kaohsiung, 81252, Taiwan (R.O.C.)  
<http://www.kia.gov.tw>

**Published Date:** June 2011

**First Issued in:** May 2004

**Frequency:** Annually

All contents were available on the website of Kaohsiung International Airport,  
<http://www.kia.gov.tw>

**Price:** NT\$200

**Purchase Bookstore:** 1. Government Publication Bookstore  
Address: No.209, Songjiang Rd.,  
Taipei 104, Taiwan (R.O.C.)  
TEL: 886-2-2518-0207  
<http://www.govbooks.com.tw>  
2. Wunan Bookstore  
Address: No.6, Zhongshan Rd.,  
Taichung 400, Taiwan (R.O.C.)  
TEL: 886-4-2226-0330  
<http://www.wunan Bookstore.com.tw>

Copyright holder : Kaohsiung International Airport

All rights reserved. Any forms of using or quotation, part or all should be authorized by copyright holder.

Designed & Printed by: Tang Dynasty Printing Enterprise

Tel: 886-7-3322236

刊名：高雄國際航空站 100 年年報

編著者：交通部民用航空局高雄國際航空站

出版機關：交通部民用航空局高雄國際航空站

電話：07-8057571

地址：812 高雄市中山四路2號

網址：<http://www.kia.gov.tw>

出版年月：中華民國101年6月

創刊年月：中華民國93年5月

刊期頻率：年報

本刊同時登載於高雄國際航空站網頁

網址：<http://www.kia.gov.tw>

定價：新台幣200元

展售處：

1. 國家書店及網路書店

地址：104 台北市松江路209號1樓

電話：02-25180207

<http://www.govbooks.com.tw>

2. 五南文化廣場及網路書店

地址：400 台中市中山路6號

電話：04-22260330

<http://www.wunanbooks.com.tw>

GPN:2009301302 ISSN:1993-9108

著作財產權人：交通部民用航空局高雄國際航空站

◎ 本書保留所有權利，欲利用本書部份或全部內容者，須徵求著作財產權人同意或書面授權。

設計印刷：唐朝打字企業行

電話：07-3322236